



PROJECT SUMMARY

The Anadarko II Tower Expansion is a new high-rise office building, amenities building, and parking garage located at the corner of Woodloch Forest Drive and Lake Robbins Drive in The Woodlands, Texas. The LEED platinum project was developed to provide additional office space, amenities, and parking for Anadarko Petroleum Corporation. The new tower was erected on the adjacent site to integrate with the existing tower and parking garage. The new 24-story tower contains approximately 17 levels of office space and a mechanical level, which reside above the new six-story parking garage. The new amenities building is located between the two towers atop the new parking garage and provides a cafeteria, gym, and other amenities for both Anadarko towers.

BES assisted with the development of the building envelope design from Design Development phase through Construction Documents. The building envelope scope consists of a below-grade waterproofing; unitized aluminum-framed curtain wall with ornamental fins; structural glass curtain wall; dimensioned limestone cladding; building cladding related systems including joint sealants, flashings, expansion joint systems, etc.; garden roof waterproofing; plaza waterproofing; and low-slope roofing.

The challenge for BES on the project was to establish the performance specifications and testing criteria for the curtainwall assembly and to design integration details to adjacent systems for a continuous air and moisture barrier of the building envelope. After successful mock-up laboratory testing, BES conducted periodic construction observations during erection of the curtainwall systems and subsequent testing of those installations.



PROJECT LOCATION

The Woodlands, Texas

PROJECT TEAM

Owner- Anadarko Petroleum Corporation
Architect- Gensler
General Contractor- Harvey

BES TEAM

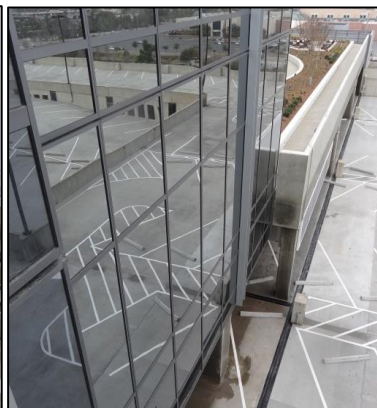
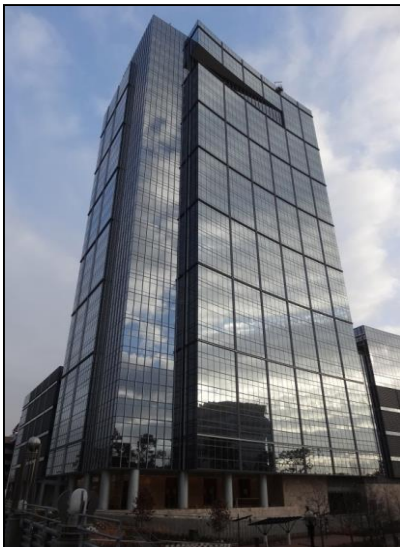
Jerry Abendroth, RBEC, RRO, CDT – Senior Principal/Partner
Amy Peevey, PE, REWC, RRO, CDT - Principal/Partner
Russell Raymond, RRC, REWC, RRO CDT, GRP – Associate Principal
Charles James, CDT– Construction Technologist

PRACTICE AREAS

Building Envelope Design
Value Engineering
Below-Grade Waterproofing
Aluminum Framed Curtain Wall
Green Roof System
Air Barrier System
Low-Slope Roofing System
Construction Observation
Construction Administration

TYPE OF CONSTRUCTION

New Construction



Building Exterior Solutions

A Terracon Company
6975 Portwest Drive, Suite 100
Houston, Texas 77024
713.467.9840