



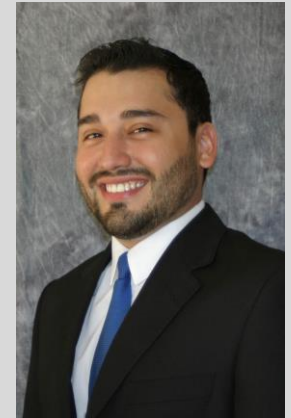
Knowledge | Experience | Solutions

**BUILDING EXTERIOR SOLUTIONS**

A Terracon COMPANY

**JOSE TAVERA**

Associate II/Staff Engineer



Jose.Tavera@terracon.com  
713-467-9840

## EXPERIENCE

Mr. Tavera joined Building Exterior Solutions, LLC (BES) in May 2016 as an Associate II/Staff Engineer. Mr. Tavera works in a supporting role on projects by performing field testing, conducting site visits, reviewing submittals, and providing project documentation. Previously, he was employed by Halliburton where he was a Completions Field Engineer for 2 years. As a field engineer, he traveled to numerous well sites and collaborated with various multidisciplinary groups to facilitate and lead the installation and operation of oil-well completion tools. His travels allowed him to focus in shale formations all over Texas, Oklahoma, Denver, and New Mexico where he learned how to perform his engineering duties at all hours of the day to meet client expectations and goals. Most importantly, he learned how to be productive in a safe manner and how to impose authority to stop work if something is not safe. His former employer also gave him the opportunity to further his development by placing him in a Business Development role within one of their Global Technical Sales teams, a position he held for the last five months of his tenure with them. He was the technical and affiliate sales focal point for Halliburton Account Representatives in Latin America. He also managed direct-sales inquiries from this region to their Dallas plant, and prepared quotes and proposals for them.

## REPRESENTATIVE PROJECTS

### Installations of Completion Tools/Equipment

- MD America, Well: Wilson-Odom 1H; Victoria, Texas\*
- Whiting Energy, Well: Razor 12F-1304B; Sterling, Colorado\*
- Mewbourne Oil, Well: Big Sinks 1 A30B FEE; Carlsbad, New Mexico\*
- Conoco/Phillips, Well: Rice University 5 & 6, Yorktown, Texas\*
- PetroQuest, Well: Leslie 4-19H; Horntown, Oklahoma\*
- SM Energy Company, Well: Cameron Heirs 2H; Victoria, Texas\*
- Bonanza Creek, Well: Pronghorn J24-15-10XRLNC; Stoneham, Colorado\*

### Operation of Installed Completion Tools/Equipment

- Chevron, Well: Midland AC/AF FEE 1HB & 2HD; Odessa, Texas\*
- PetroHawk Energy Corporation, Well: Dilworth 34H; Victoria, Texas\*
- US Enercorp, Well: S McKnight 1305H; Alice, Texas\*
- Devon Energy, Well: Schiro 2-18N-3W 2MH; Stillwater, Oklahoma\*
- American Energy, Well: Duncan 35-26-19N-2E 2WH; Duncan, Oklahoma\*
- Sandridge Energy, Well: Tonya 2811 4-27H; Alfalfa, Oklahoma\*

### Completion Tools Build and Tested

- RapidStage® Multistage Frac Sleeve Systems\*
- RapidStart® Initiator CT (Casing Test) Toe Sleeves\*
- VersaStim® Expandable Liner Hanger System\*
- Versa-Set® Production Packer\*

### Global Technical Sales Quotes and Proposals

- ZADCO, Flow Control Equipment for 134 wells, United Arab Emirates\*
- Total Austral SA, Flow Control Equipment, Argentina\*
- Repsol E&P, Completions Equipment, Bolivia\*
- PetroBras, Mechanical Setting Tools, Brazil\*
- Cardon IV, Subsurface Safety Valves, Venezuela\*
- Platino Energia Barbados Corp., On-Off Equipment, Colombia\*

\*Previous experience prior to Building Exterior Solutions, Inc.

## EDUCATION

The University of Houston,  
Bachelor of Science in Civil  
Engineering, December 2013

San Jacinto College, Associates  
of Science in Mathematics, July  
2010

## REGISTRATION

Engineer-In-Training (EIT)

## PRACTICE AREAS

Building Envelope Assessment  
Forensic Evaluation  
Construction Observation  
Design Peer Review  
Submittal/RFI Review  
Litigation Support  
Repair and Rehabilitation Design  
Fenestration Systems  
Wall Cladding Systems  
Roofing Systems  
Waterproofing Systems  
Field Testing